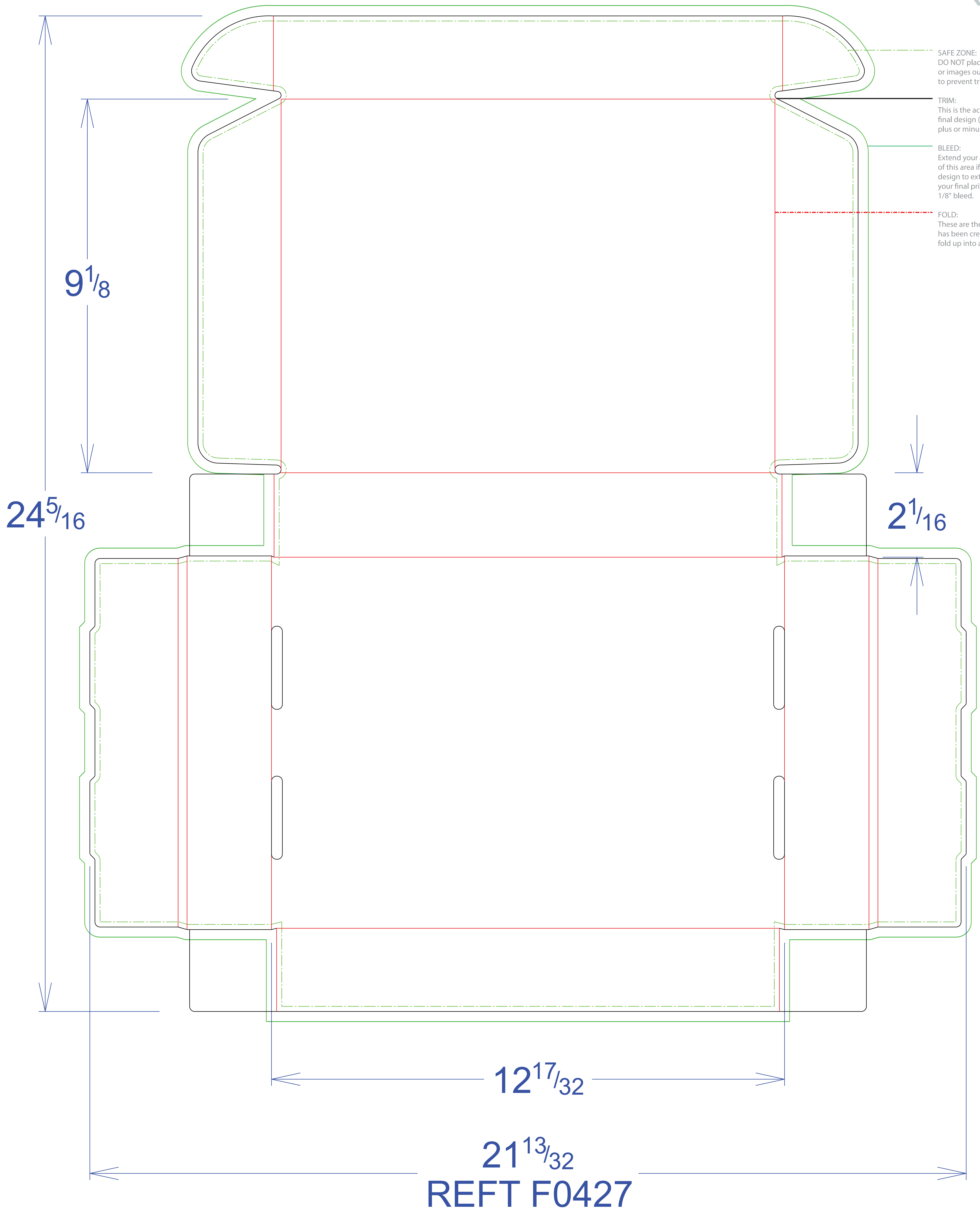


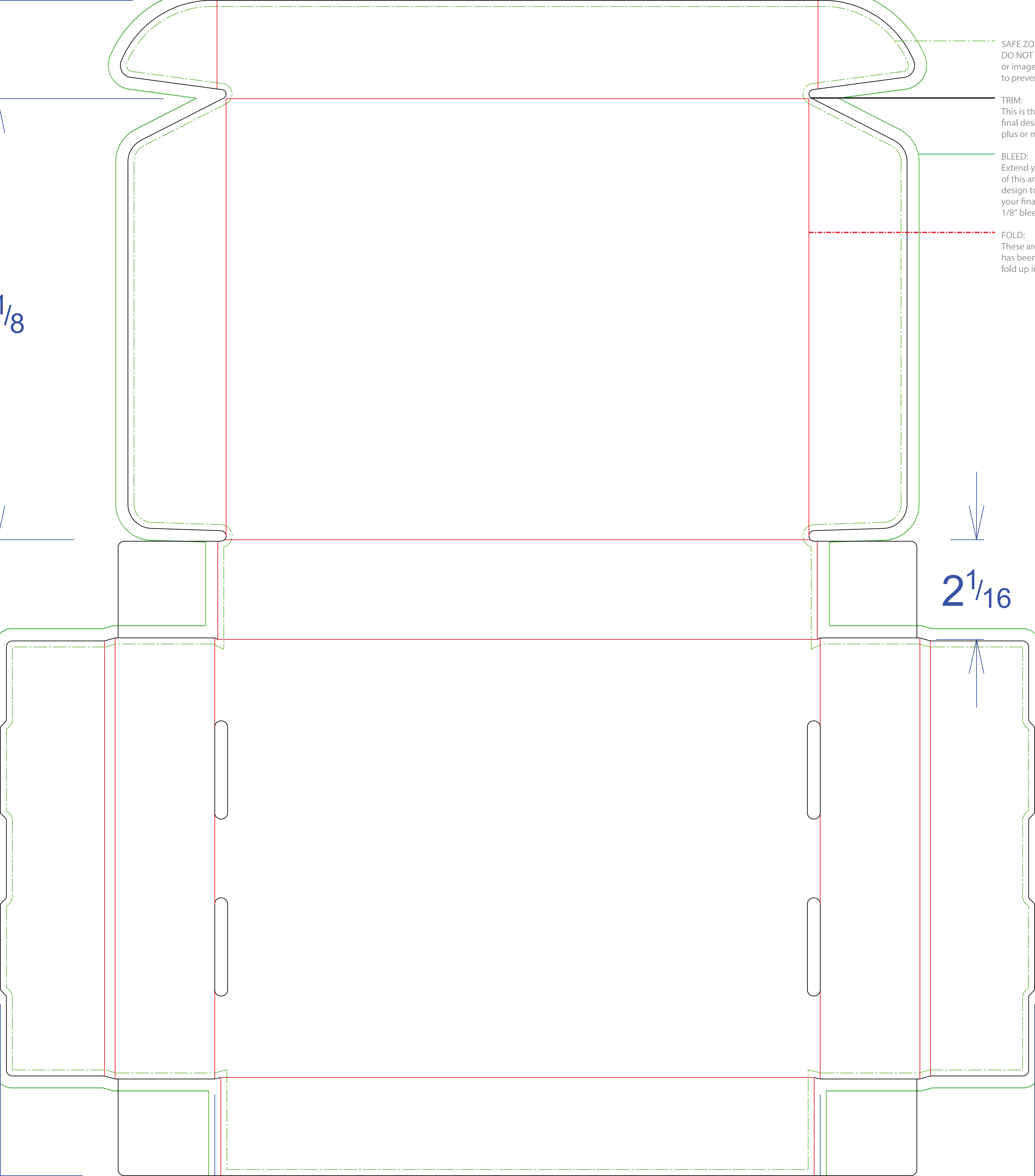
SAFE ZONE:  
DO NOT place important text  
or images outside this area  
to prevent trimming.

TRIM:  
This is the actual cut of the  
final design (with up to 1/8"  
plus or minus variance).

BLEED:  
Extend your artwork to the edge  
of this area if you want your  
design to extend to the edge of  
your final prints. We require  
1/8" bleed.

FOLD:  
These are the areas the paper  
has been creased to allow it to  
fold up into a box.





SAFE ZONE  
DO NOT  
or image  
to prevent

TRIM:  
This is the  
final design  
plus or minus

BLEED:  
Extend your  
of this area  
design to  
your final  
1/8" bleed

FOLD:  
These are  
has been  
fold up in

1/8

2 1/16